

Overall Information

Table1- Overall Information

Vehicle plate number	33572 (28958)
CPK data logger number	LN: 001521, DN: 1995, Sim Number +989218469643
Bus line	Number 2 (west to east bus line)
Bus Terminals	Khavaran Bus Terminal - Western Bus Terminal
Total path distance	19 km
DPF producer company	HJS_03 (active system with FBC – electrical heater)
Installation date	19/Feb/2015
Report period	01/Sep/2015 – 15/Sep/2015 (fifteen days)
K value - DPF upstream	1.80 [1/m]
K value – DPF downstream	0.02 [1/m]

Table 2- DPF Maintenance History

Filter maintenance date	DPF has been working from installation date until now without any cleaning.
Dosing status	Dosing value has been kept constant from installation date until now.

Table 3- Fuel and Additive Consumption Information

Bus mileage (from DPF installation date)	29408 km
Bus mileage over the period	1974 km
Working days over the period	14 days
Stop days	1 day
Data logger working days	14 days
Working hours over the period	134 hours 58 minutes
Average working hours per day (including stop days)	8 hours 60 minutes
Bus average speed	14.62 km/hr
idle speed time to all working time ration	-
Total Bus fuel consumption over the period	1265 lit
Fuel consumption per hour	9.37 lit/hr
Average fuel consumption	0.64 lit/km
Total Bus additive consumption over the period	0.530 lit
Average additive consumption	270 cc/km
Additive consumption to fuel ration	420 cc per 1000 lit (batch dosing with tank level)

Notice: Idle speed time information missed due to rpm sensor problem.

Temperature, Pressure and Engine Speed Overview

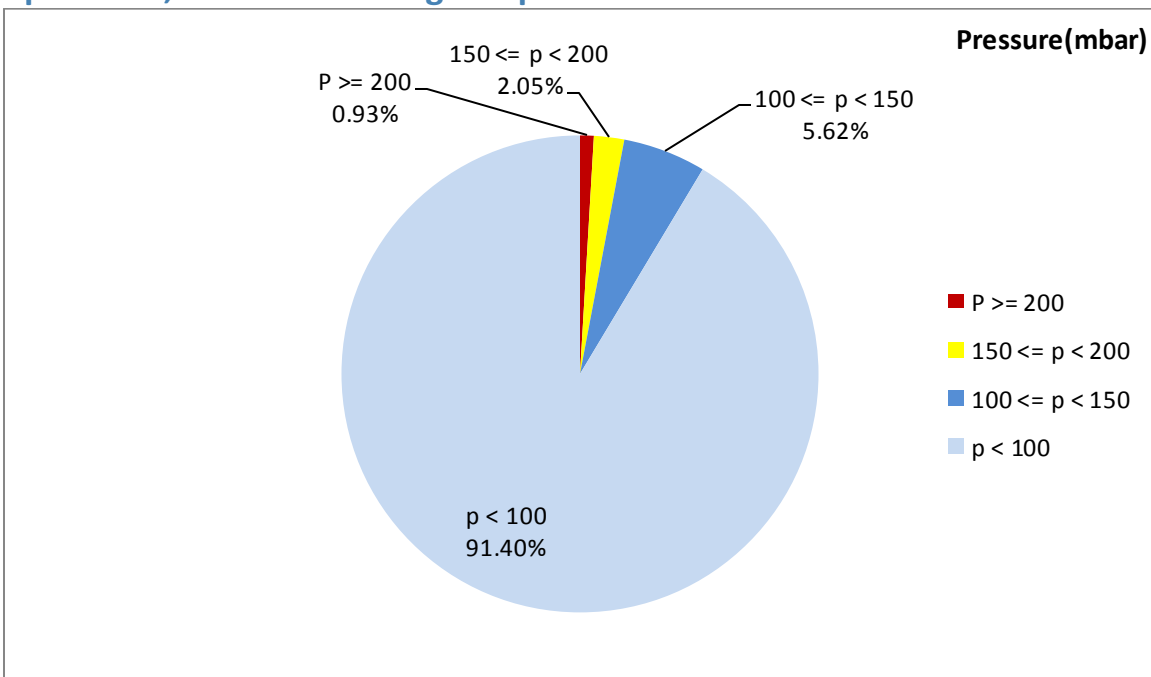


Figure 1- Pressure distribution over the working hours

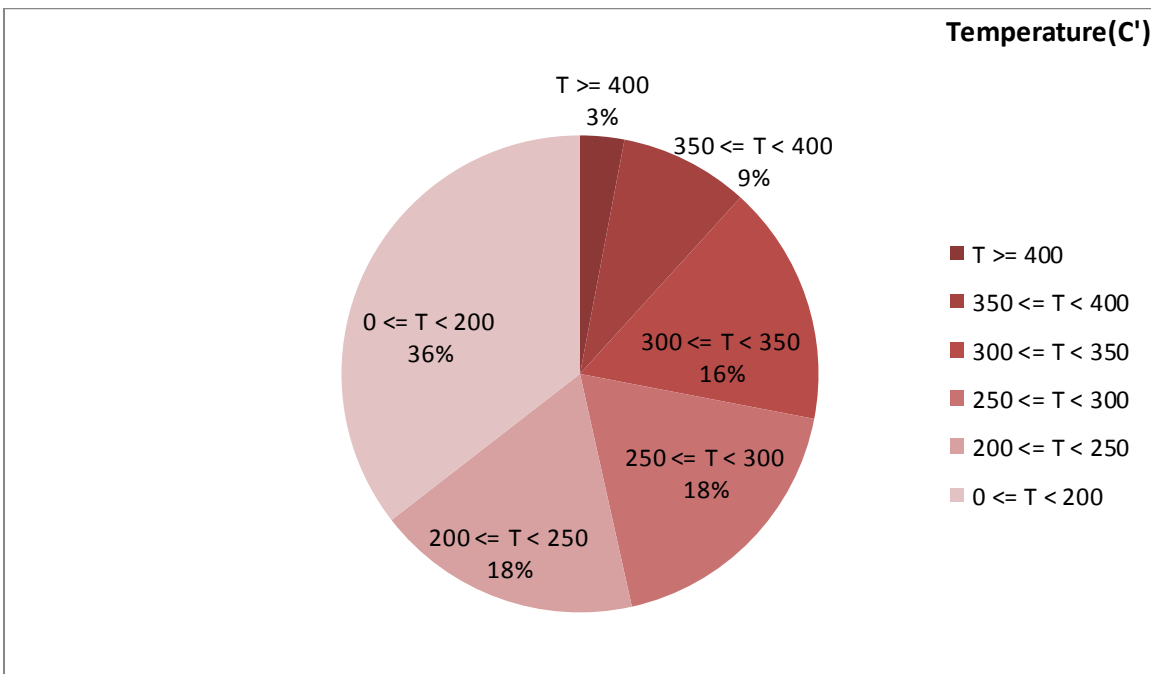


Figure 2-Temperature distribution over the working hours

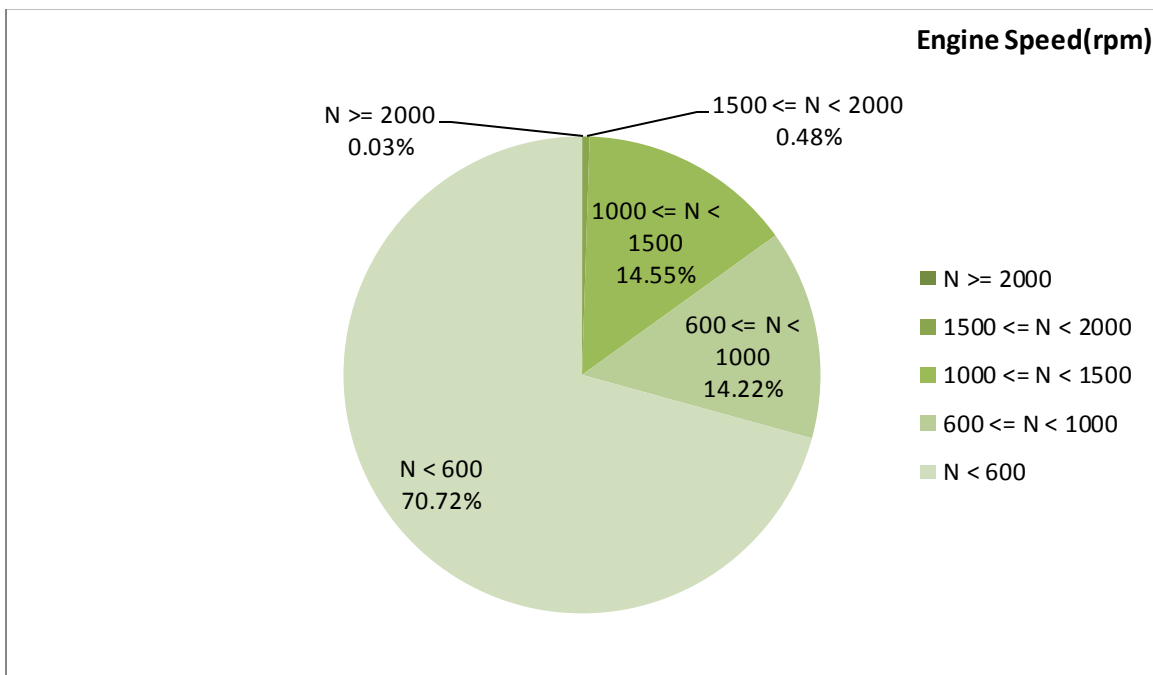


Figure 3- Engine speed distribution over the working hours

Table 4- Mean values

Mean temperature (C)	Mean pressure(mbar)	Mean engine speed(rpm)
236.64	35.94	-

Table 5- Mean values without idling

Mean temperature (C)	Mean pressure(mbar)	Mean engine speed(rpm)
-	-	-

Table 6- Max-min values

Max-min temperature(C)	Max-min pressure(mbar)	Max-min engine speed(rpm)
542-50	423-0	-

Notice: RPM sensor got problem during this period. So some related parameters and information are unreliable.

Detailed Pressure Analysis

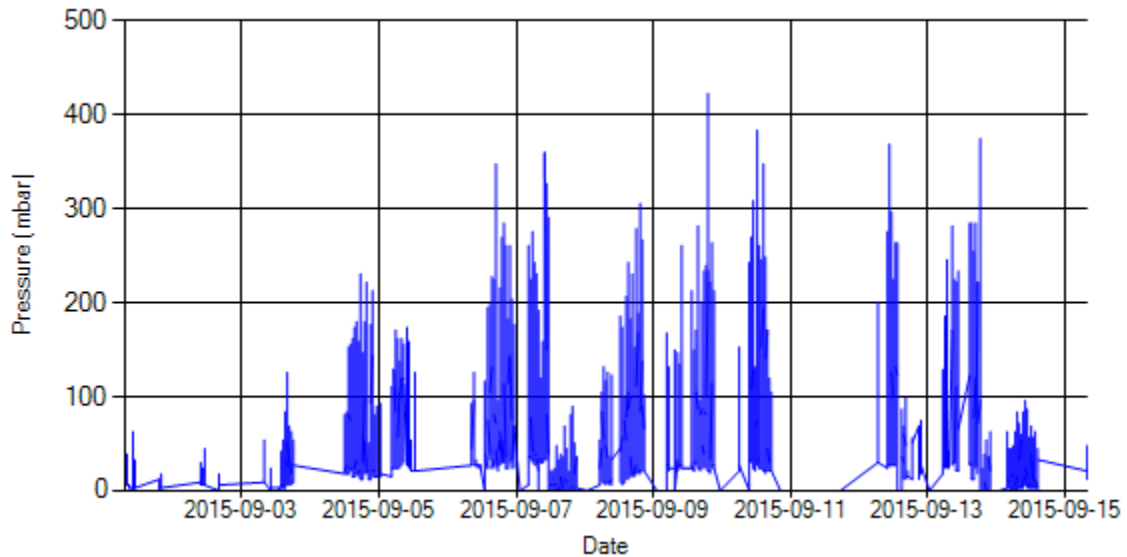


Figure 4- Pressure distribution over the period

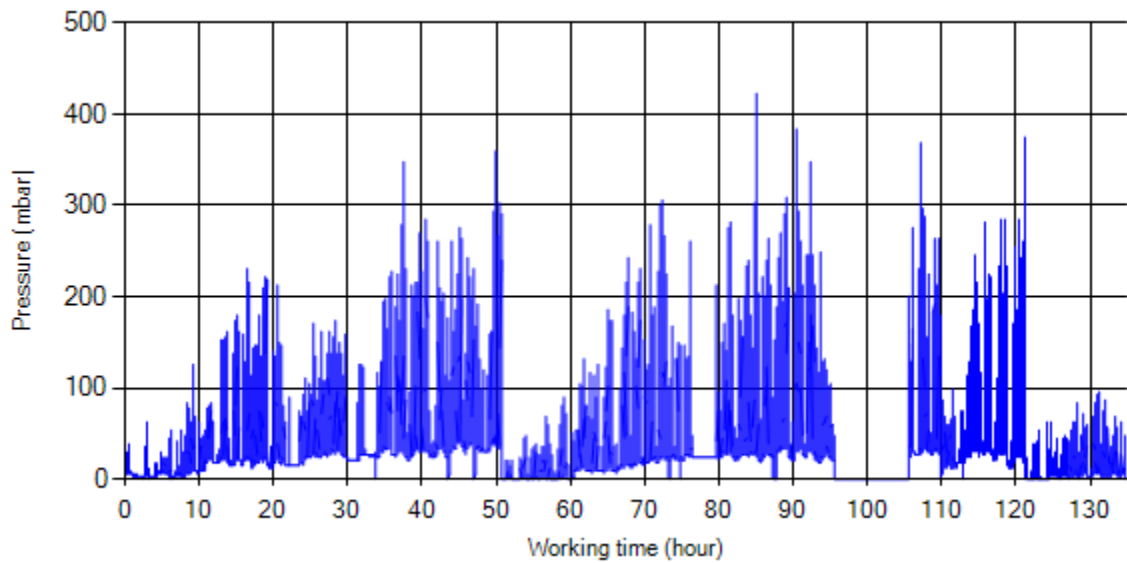


Figure 5- Pressure vs. working hours

Notice: backpressure distribution was shown into two diagrams. As obvious in figure 5, stop-working periods were eliminated and pressure was displayed along working hours.

Detailed Temperature Analysis

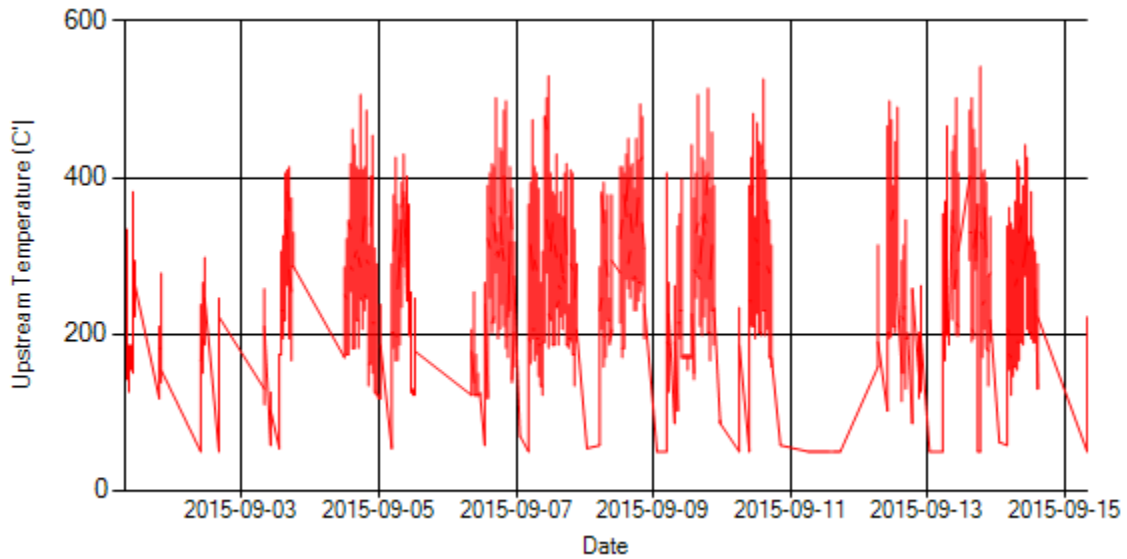


Figure 6- Temperature distribution over the period

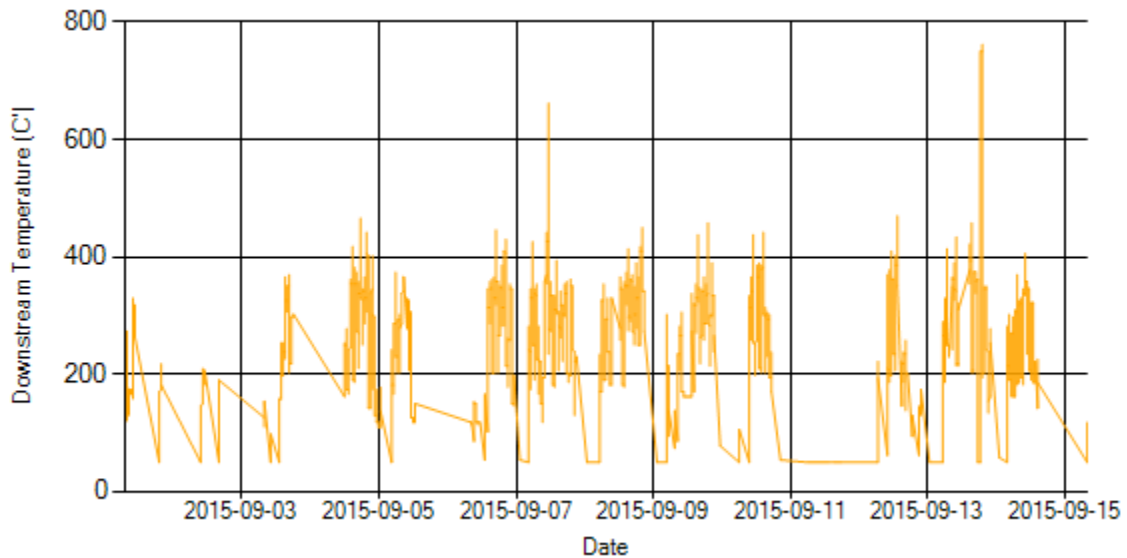


Figure 7- Temperature distribution over the period

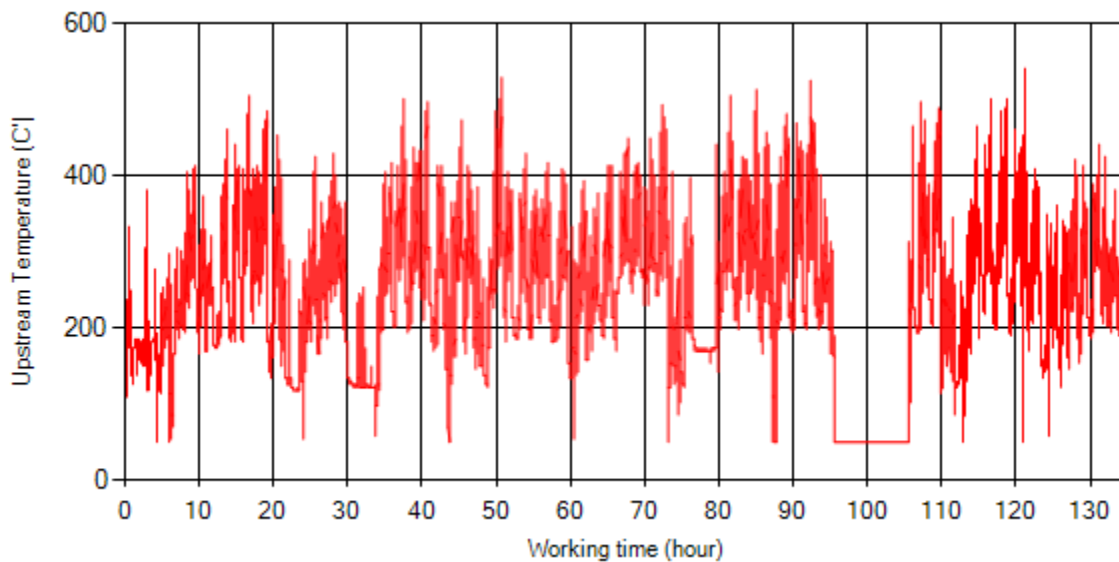


Figure 8- Temperature vs. working hours

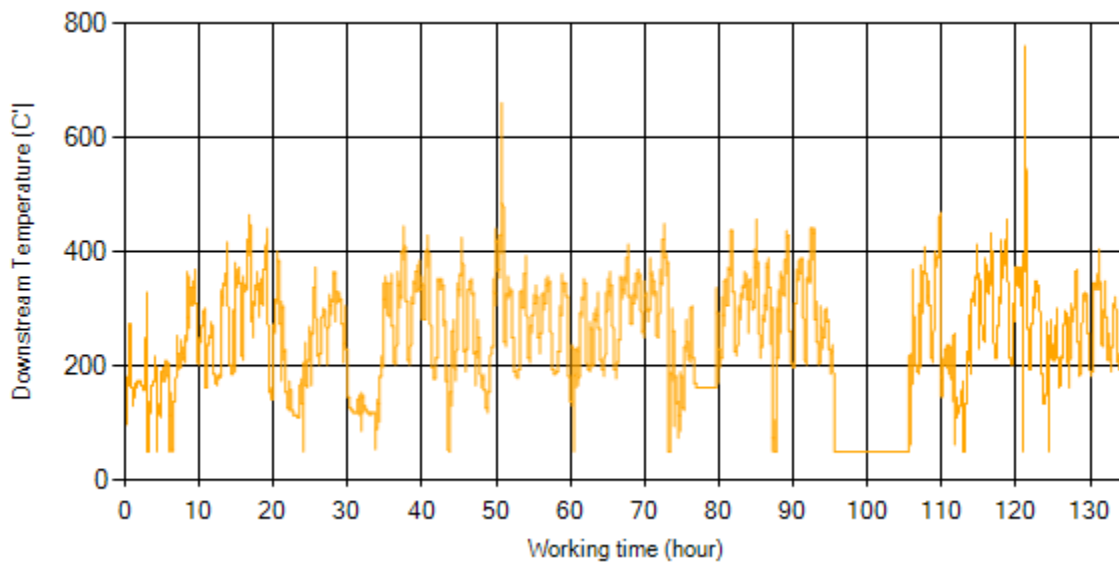


Figure 9- Temperature vs. working hours

Engine Speed Diagrams

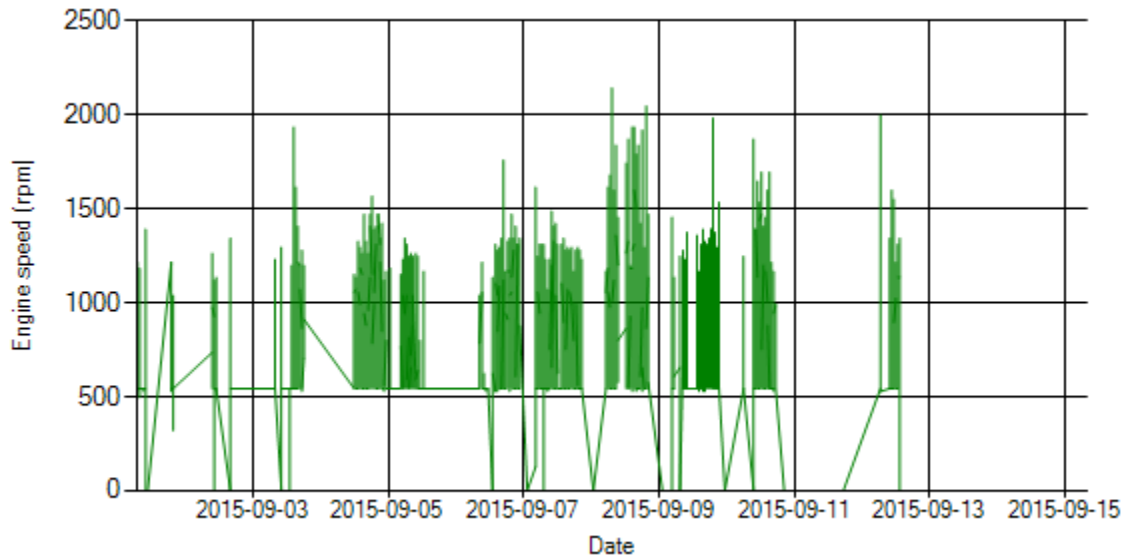


Figure 10- Engine speed distribution over the period

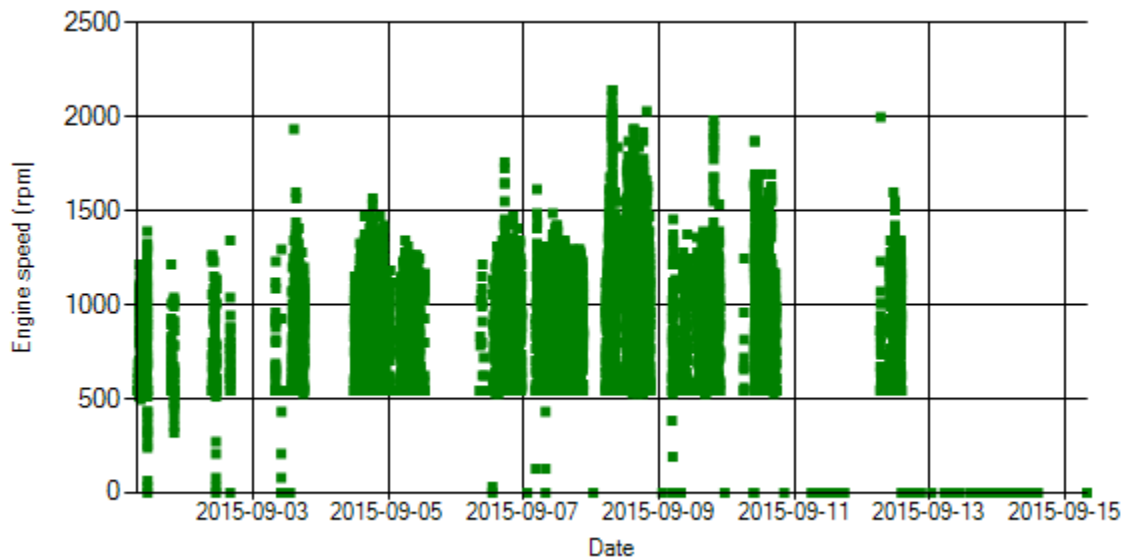


Figure 11- Engine speed diagram for calculating CPK's working days

Notice: RPM sensor got problem on Sep 12th .

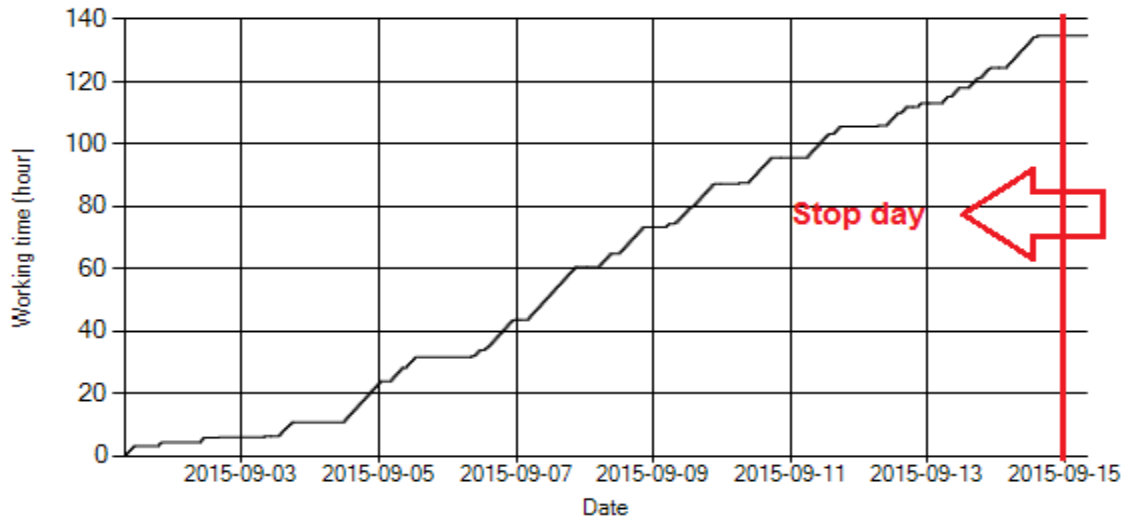


Figure 12- Time diagram for calculating CPK's working days

Notice: Data logger sampling time can be calculated from Figure 12. The lines parallel with Date axis show days without data logger data.

Pressure-Engine Speed diagrams

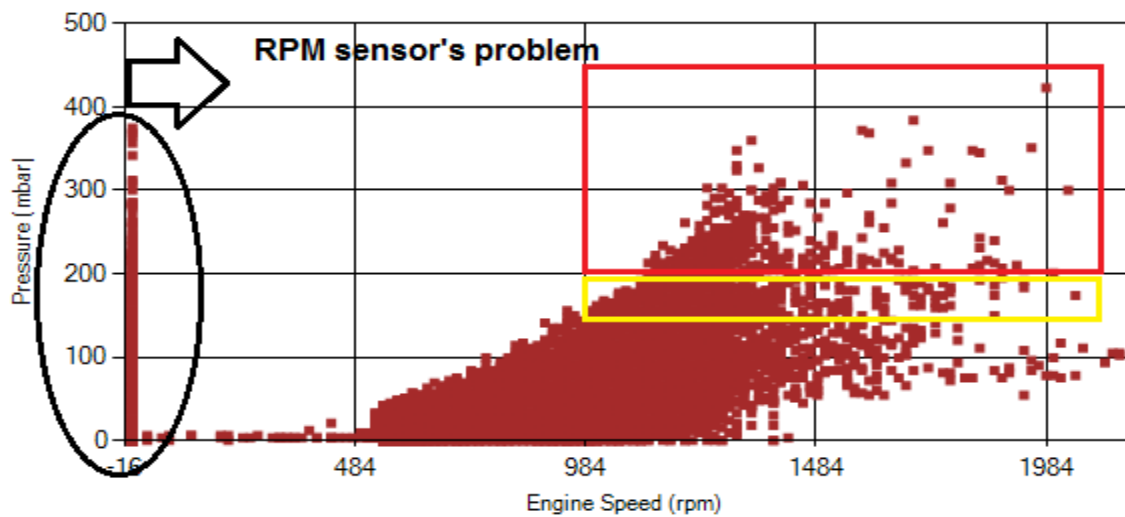


Figure 13- Pressure against engine speed

Notice: Red alarm (pressure > 200 mbar) and yellow alarm (200 > pressure > 150) ranges were indicated in figure 13.

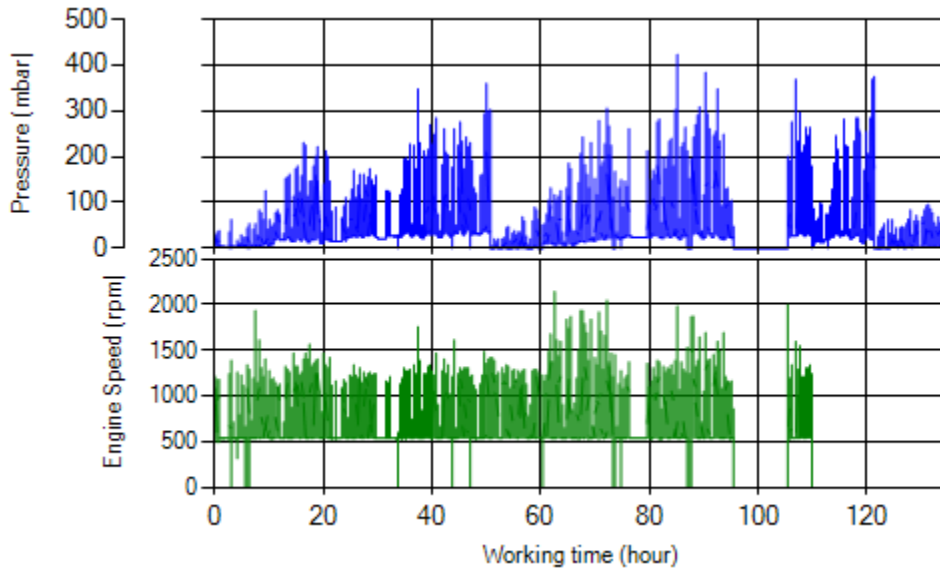


Figure 14- P, N distribution vs. working hours

Temperature-Engine Speed diagrams

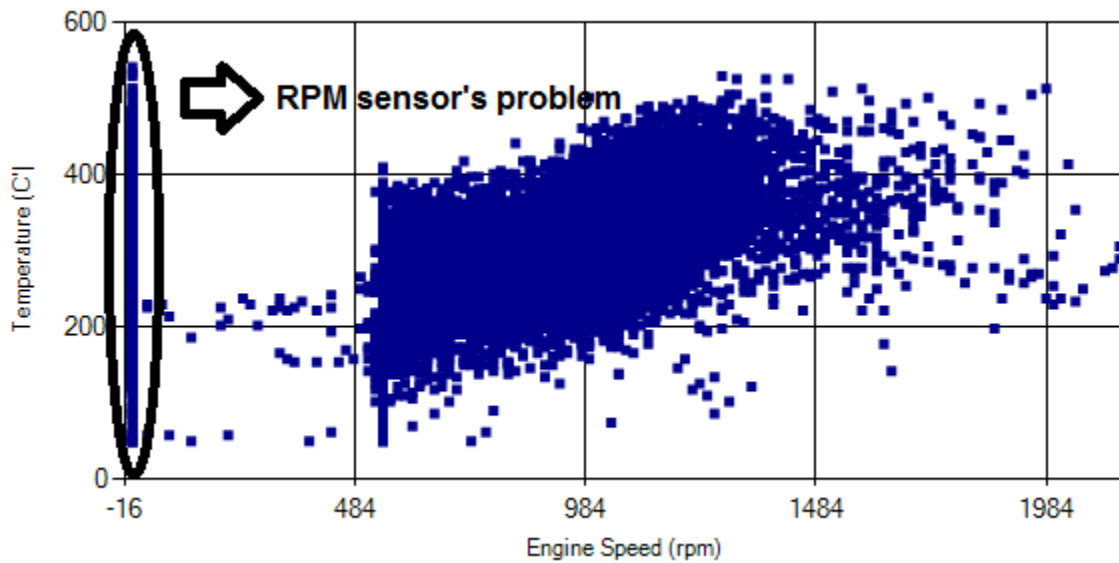


Figure 15- Temperature against engine speed

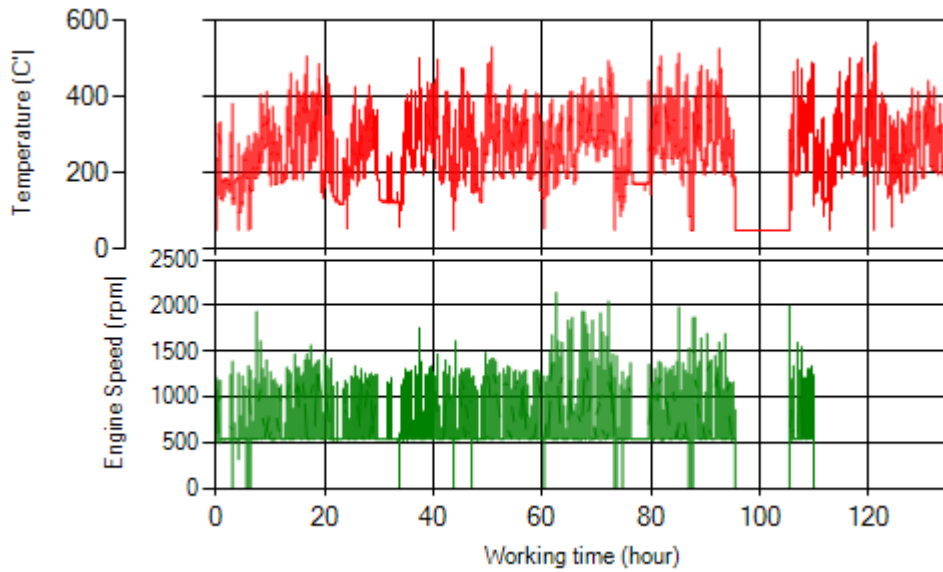


Figure 16- T, N distribution vs. working hours

Filter Operation Analysis

- As depicted in figure 1, 0.93% of total working time pressure is above 200 mbar and 2.98% above 150mbar.
- Figure 2 displays flow temperature distribution for DPF's upstream. It can be obviously observed that 3% of total working time temperature is above 400°C. Considering temperature distribution of this line's buses ($T_{400} \ll 1\%$), it is clear this distribution was because of high back pressure.

Filter operation status	Excellent <input type="checkbox"/>	Good <input checked="" type="checkbox"/>
	Maintenance required <input type="checkbox"/>	Failed <input type="checkbox"/>