

Overall Information

Table1- Overall Information

Vehicle plate number	33572 (28958)
CPK data logger number	LN: 001521, DN: 1995, Sim Number +989218469643
Bus line	Number 2 (west to east bus line)
Bus Terminals	Khavaran Bus Terminal - Western Bus Terminal
Total path distance	19 km
DPF producer company	HJS_03 (active system with FBC – electrical heater)
Installation date	19/Feb/2015
Report period	01/Jul/2016 – 15/Jul/2016 (fifteen days)
K value - DPF upstream	1.9 [1/m]
K value – DPF downstream	0.02 [1/m]

Table 2- DPF Maintenance History

Filter maintenance date	<p>DPF was cleaned on Oct 5th for the first time. The second cleaning was done on Dec 19th. The third cleaning was done on Apr 2nd after 55613 km.</p> <p>A new core was installed on Jun 12th. New core was cleaned on 2016.06.25 for the first time.</p>
Dosing status	Dosing value has been kept constant from installation date until now.

Table 3- Fuel and Additive Consumption Information

Bus mileage (from DPF installation date)	70487 km
Bus mileage over the period	2355 km
Working days over the period	12 days
Stop days	3 days
Data logger working days	12 days
Working hours over the period	155 hours 54 minutes
Average working hours per day (including stop days)	10 hours 23 minutes
Bus average speed	15.1 km/hr
idle speed time to all working time ration	52.4 %
Total Bus fuel consumption over the period	1342 lit
Fuel consumption per hour	8.6 lit/hr
Average fuel consumption	0.57 lit/km
Total Bus additive consumption over the period	0.638 lit
Average additive consumption	271.25 cc/km
Additive consumption to fuel ration	476 cc/1000lit

Temperature, Pressure and Engine Speed Overview

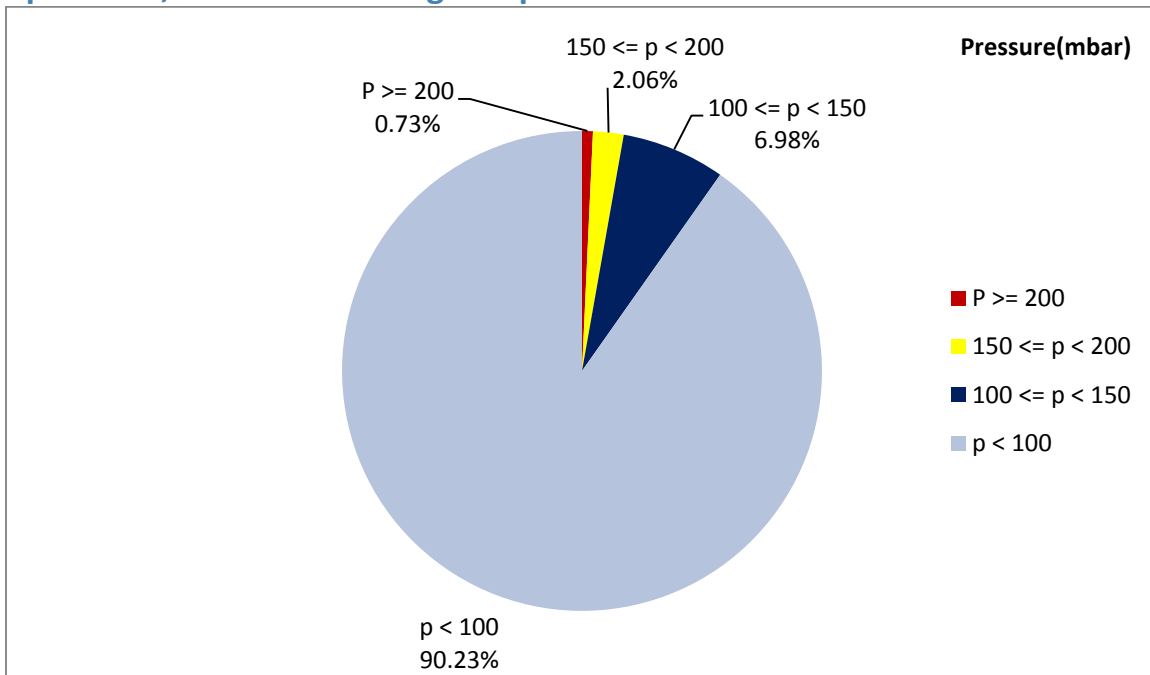


Figure 1- Pressure distribution over the working hours

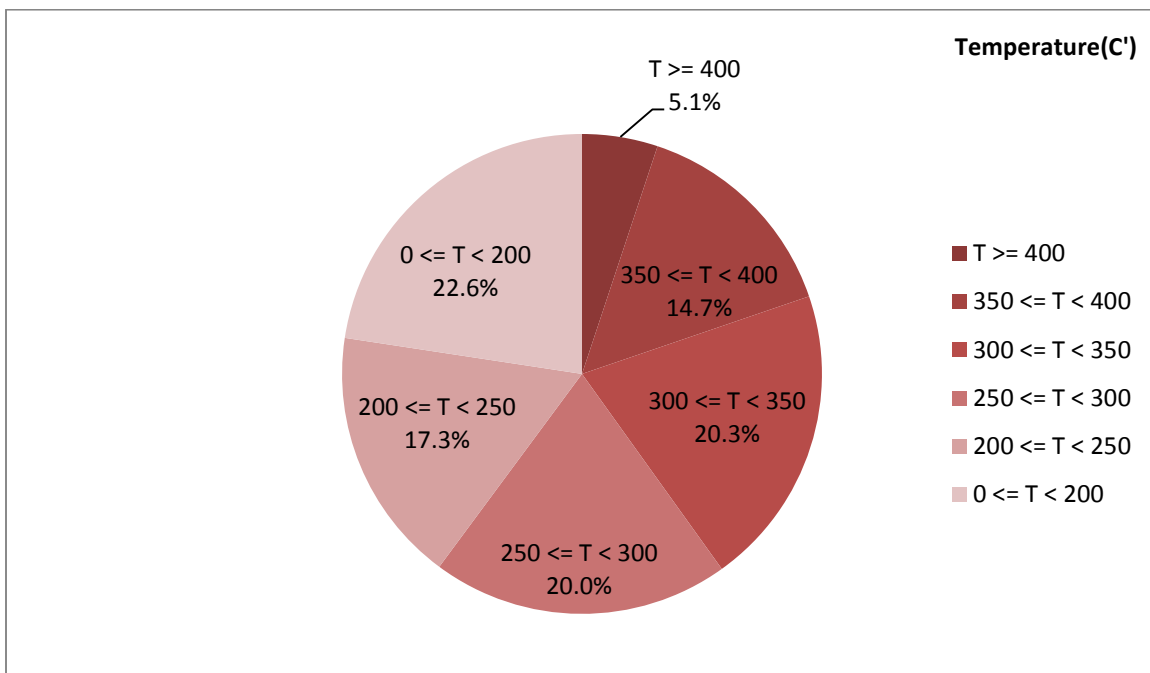


Figure 2-Temperature distribution over the working hours

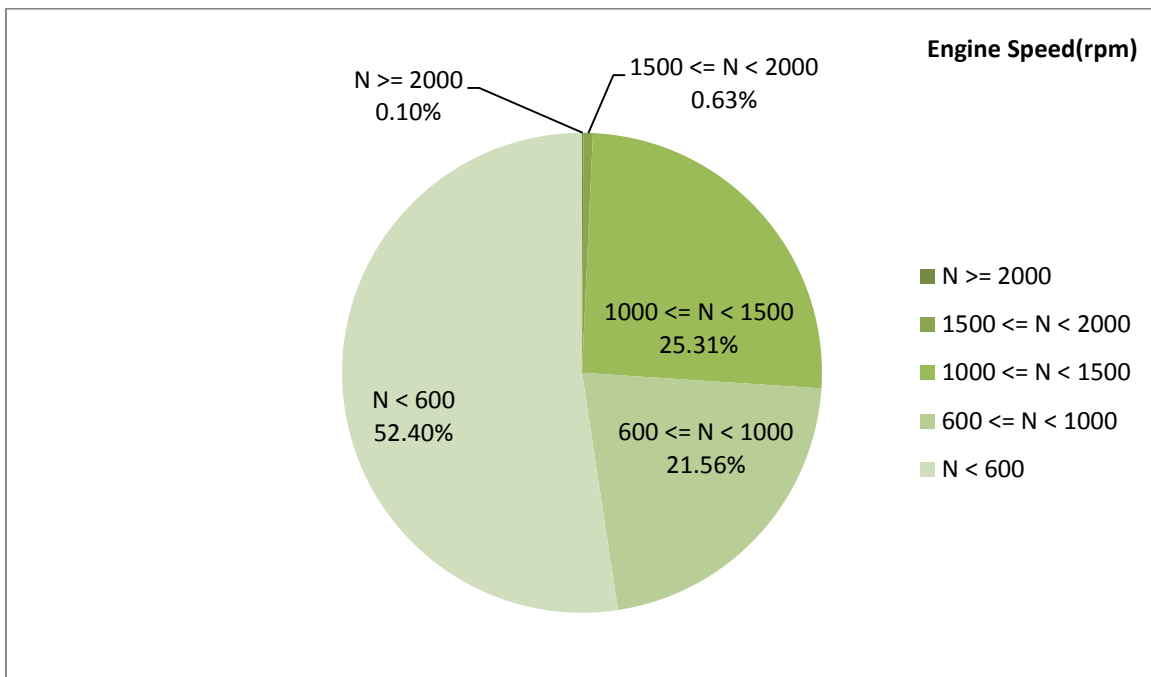


Figure 3- Engine speed distribution over the working hours

Table 4- Mean values

Mean temperature (C)	Mean pressure(mbar)	Mean engine speed(rpm)
274.75	39.89	763

Table 5- Mean values without idling

Mean temperature (C)	Mean pressure(mbar)	Mean engine speed(rpm)
334.26	70.28	1002

Table 6- Max-min values

Max-min temperature(C)	Max-min pressure(mbar)	Max-min engine speed(rpm)
526-50	342-0	2144-320

Detailed Pressure Analysis

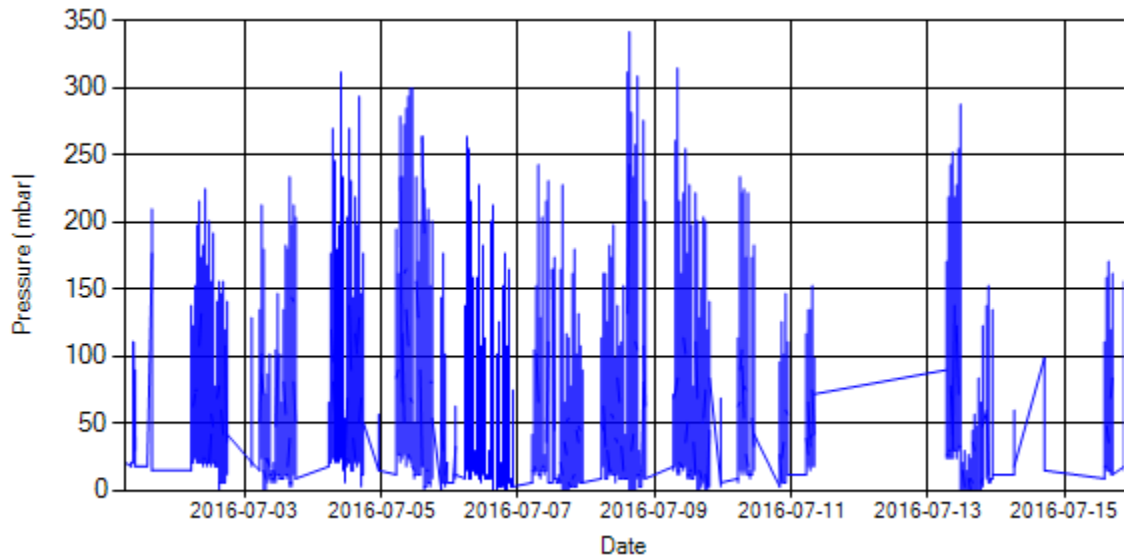


Figure 4- Pressure distribution over the period

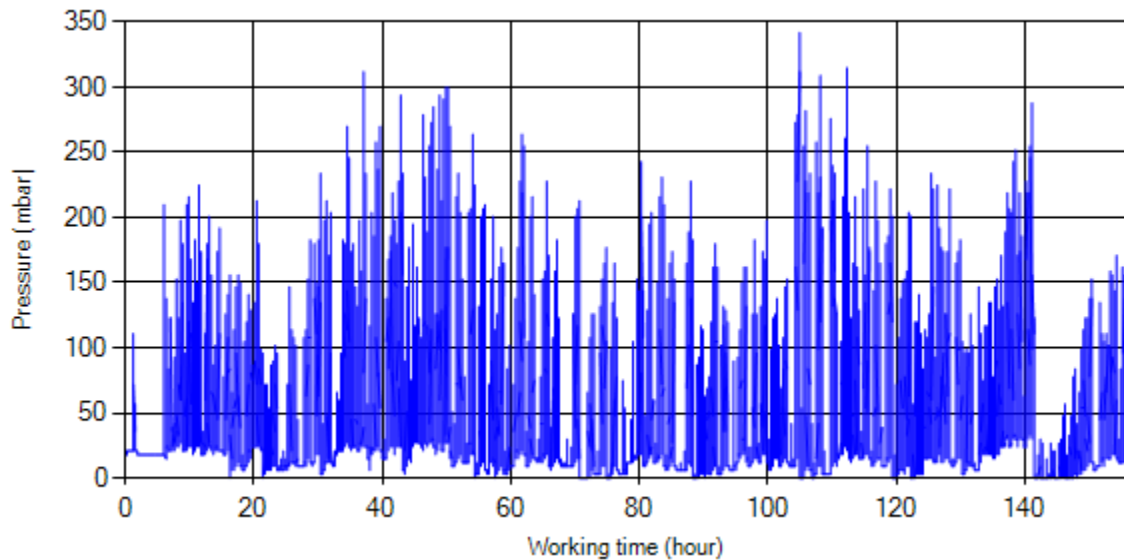


Figure 5- Pressure vs. working hours

Notice: backpressure distribution was shown into two diagrams. As obvious in figure 5, stop-working periods were eliminated and pressure was displayed along working hours.

Detailed Temperature Analysis

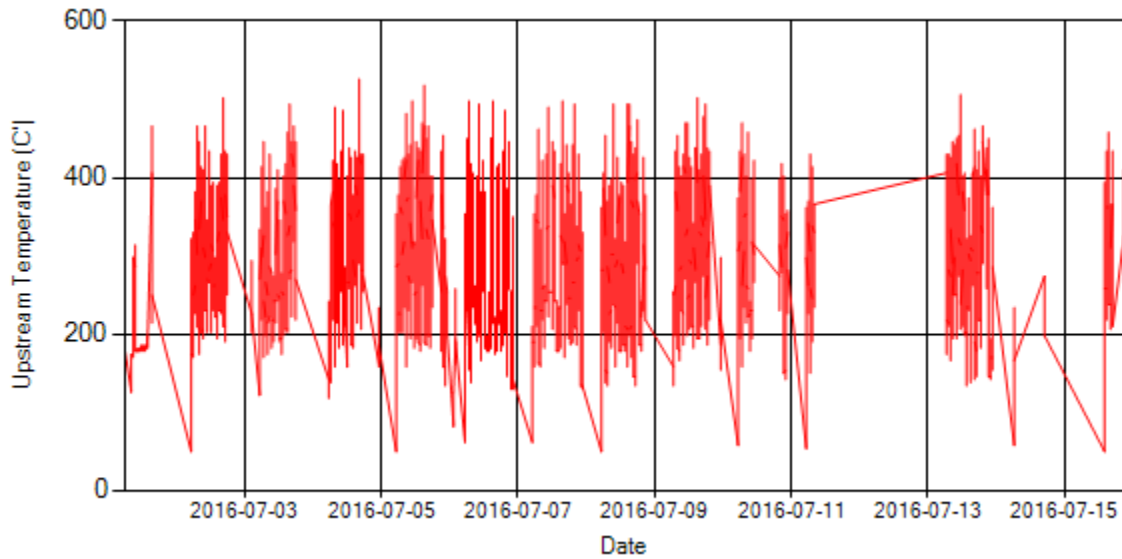


Figure 6- Temperature distribution over the period

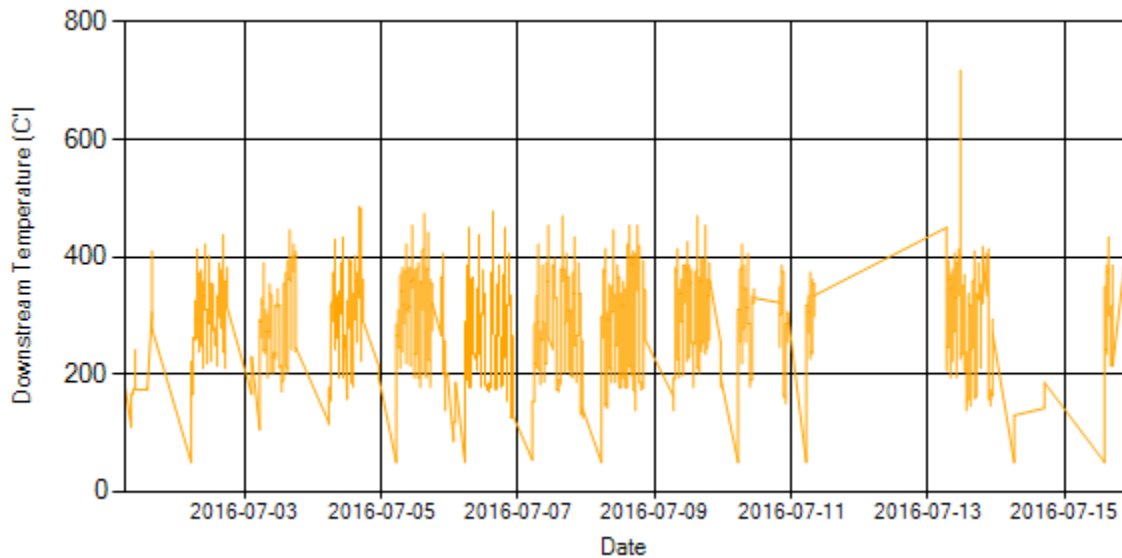


Figure 7- Temperature distribution over the period

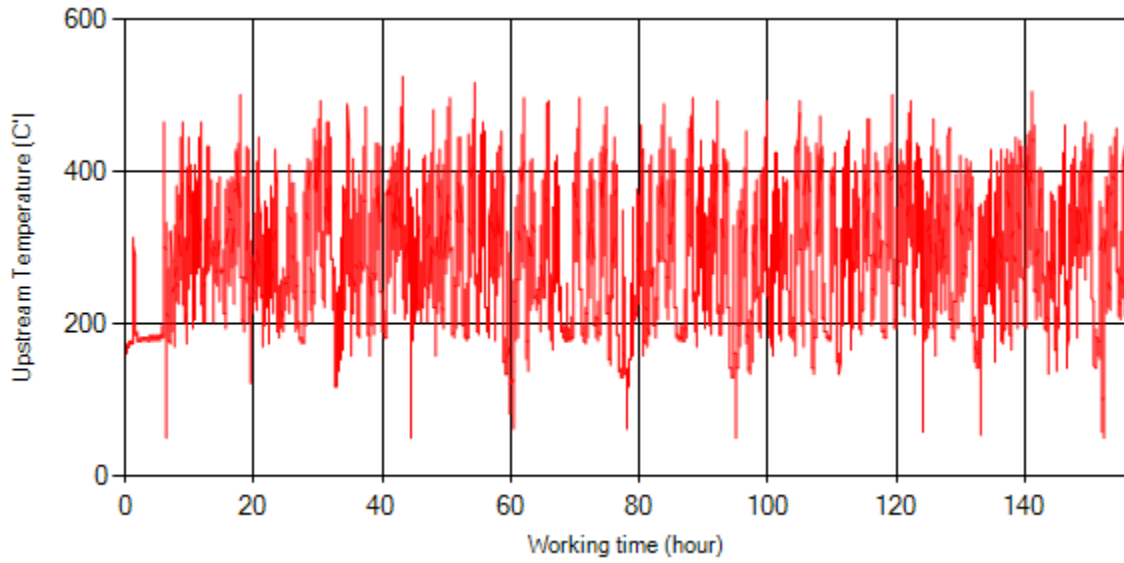


Figure 8- Temperature vs. working hours

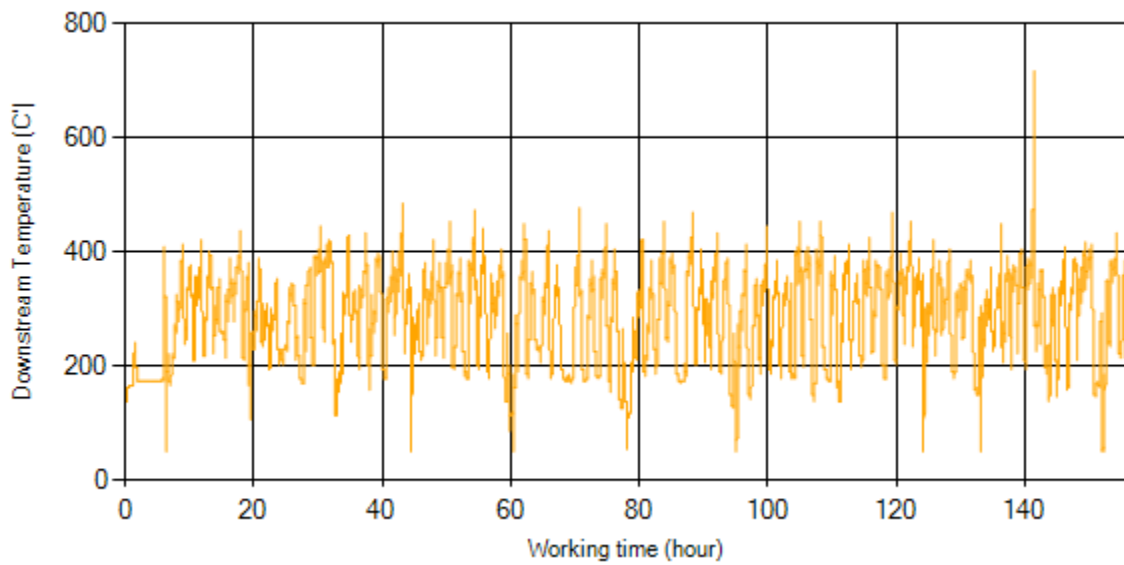


Figure 9- Temperature vs. working hours

Engine Speed Diagrams

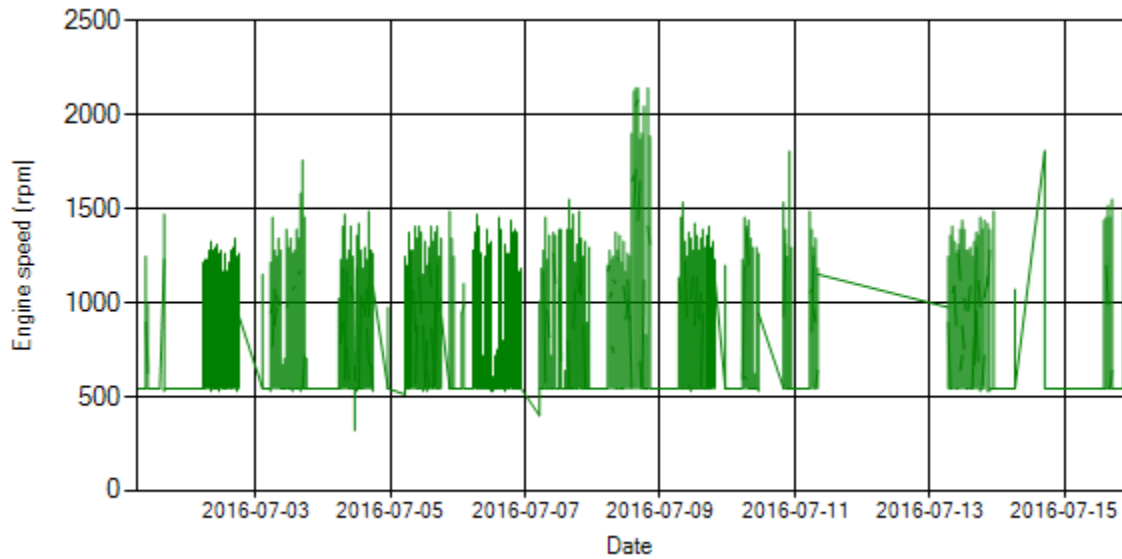


Figure 10- Engine speed distribution over the period

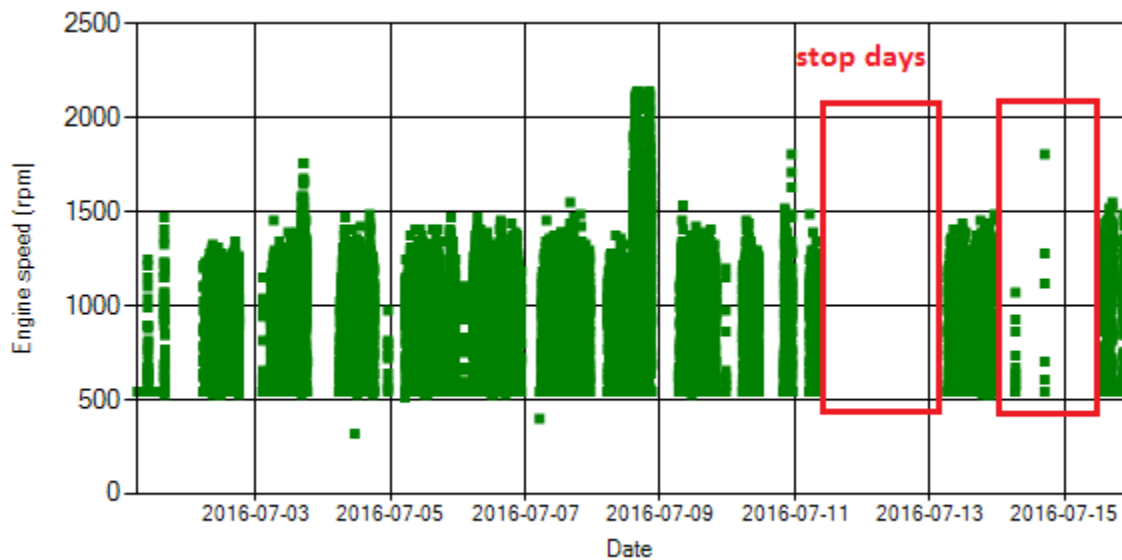


Figure 11- Engine speed diagram for calculating CPK's working days

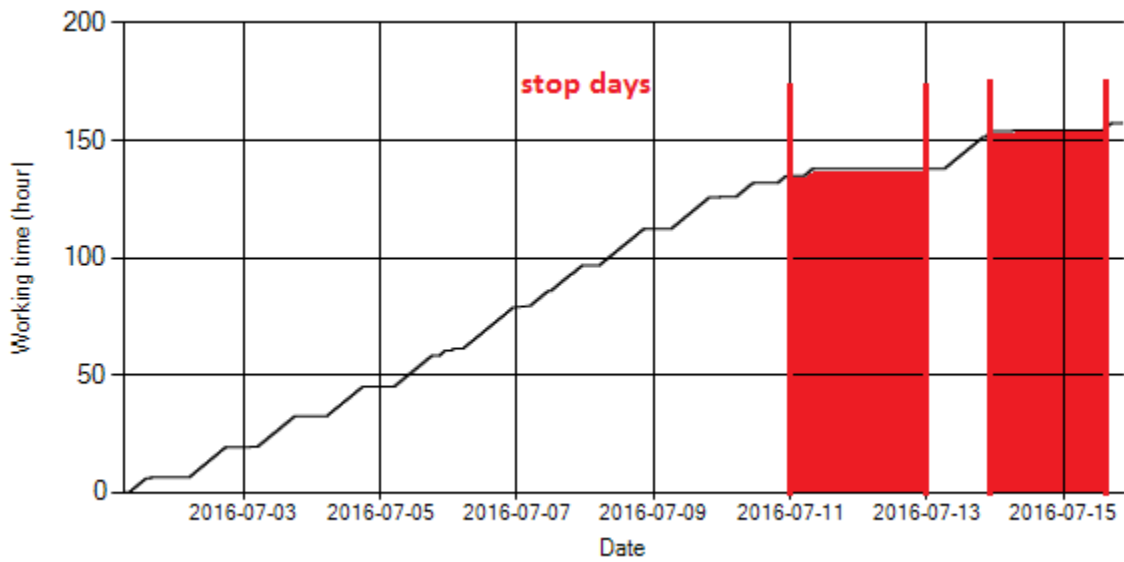


Figure 12- Time diagram for calculating CPK's working days

Notice: Data logger sampling time can be calculated from Figure 12. The lines parallel with Date axis show days without data logger data. As depicted in Figure 12 system was stationary for 3 days.

Pressure-Engine Speed diagrams

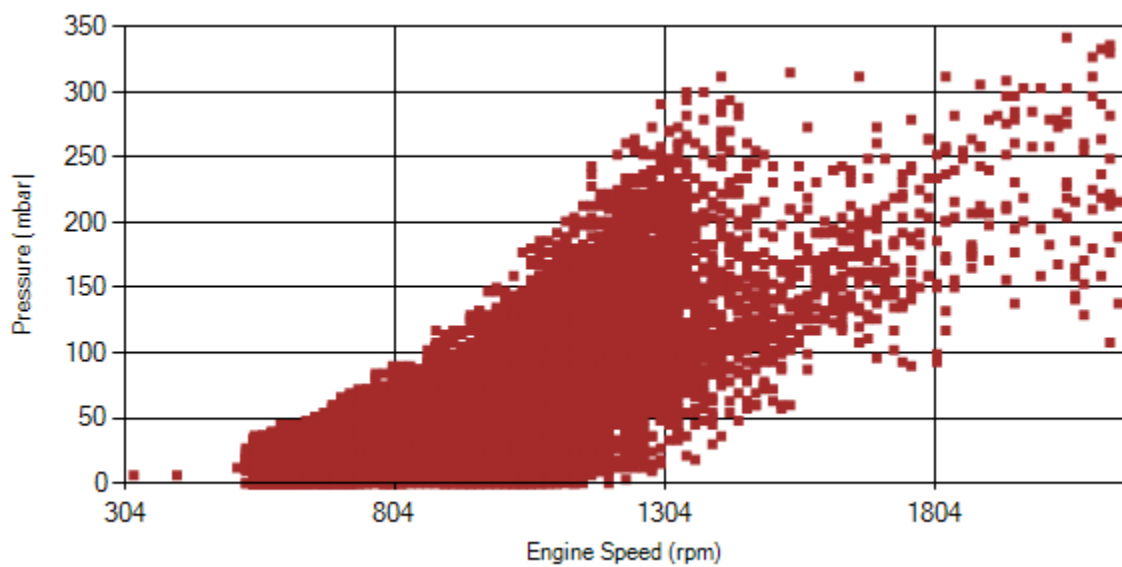


Figure 13- Pressure against engine speed

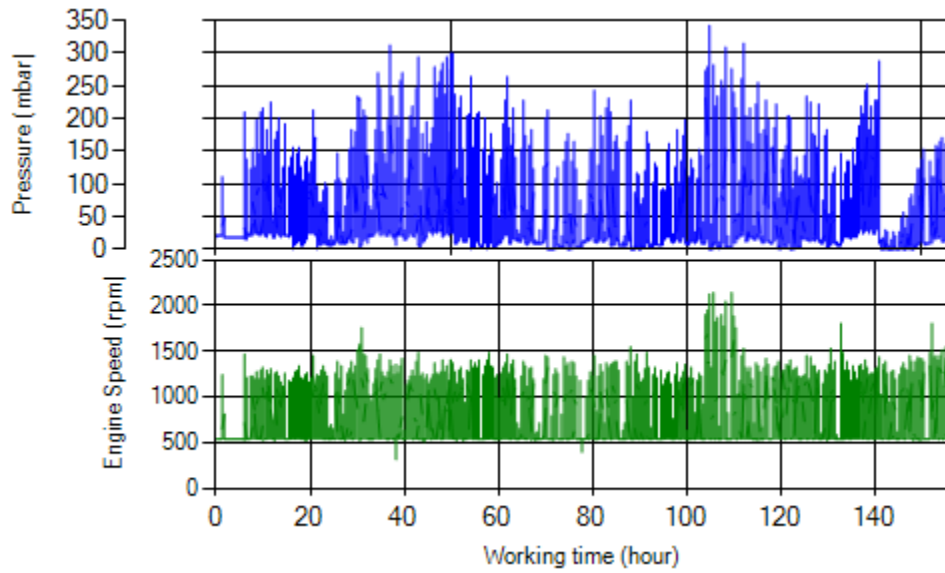


Figure 14- P, N distribution vs. working hours

Temperature-Engine Speed diagrams

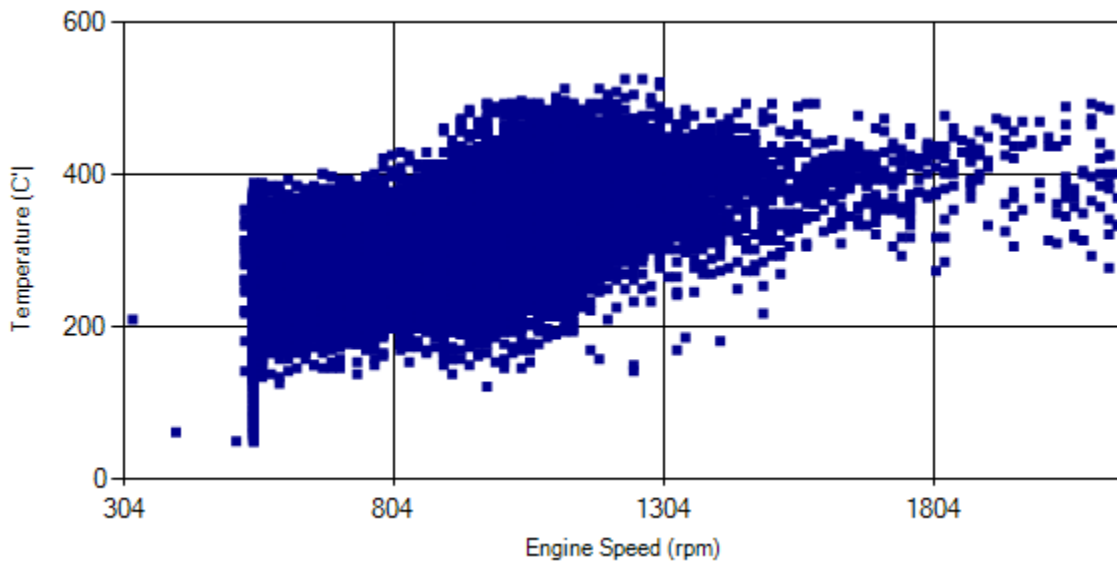


Figure 15- Temperature against engine speed

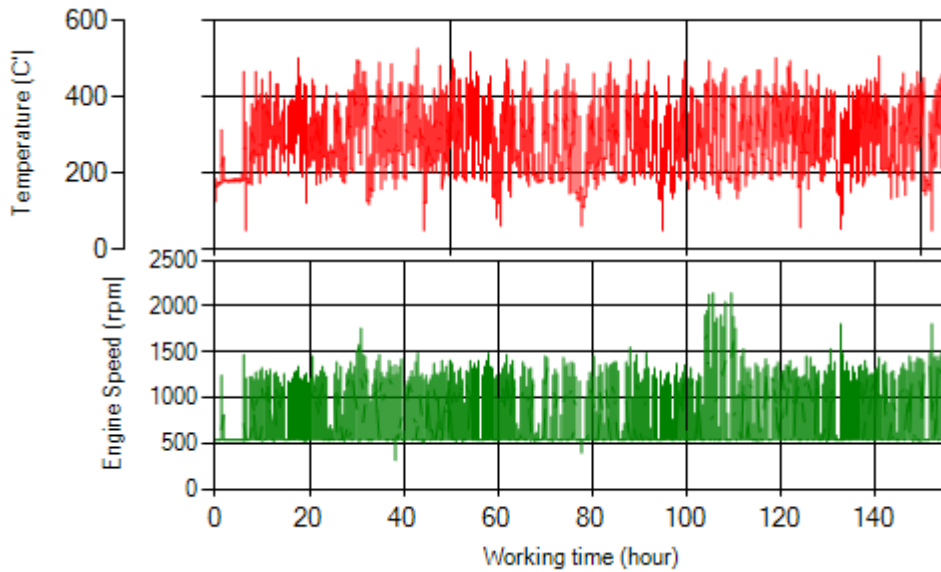


Figure 16- T, N distribution vs. working hours

Filter Operation Analysis

- As depicted in figure 1, 0.73% of total working time pressure is above 200 mbar and 2.79% above 150 mbar during this period.
- Figure 2 displays flow temperature distribution for DPF's upstream. It can be obviously observed 19.8% of total working time temperature is above 350°C.

Filter operation status	Excellent <input type="checkbox"/>	Good <input checked="" type="checkbox"/>
	Maintenance required <input type="checkbox"/>	Failed <input type="checkbox"/>